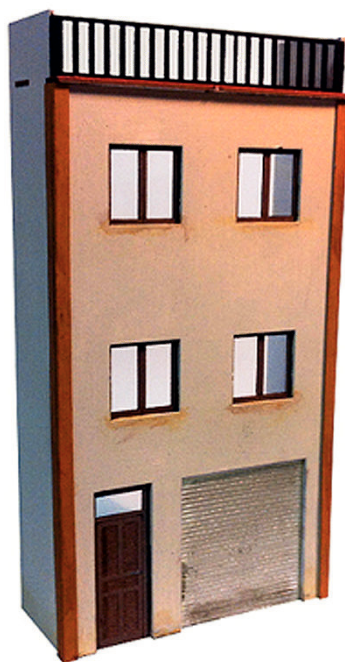
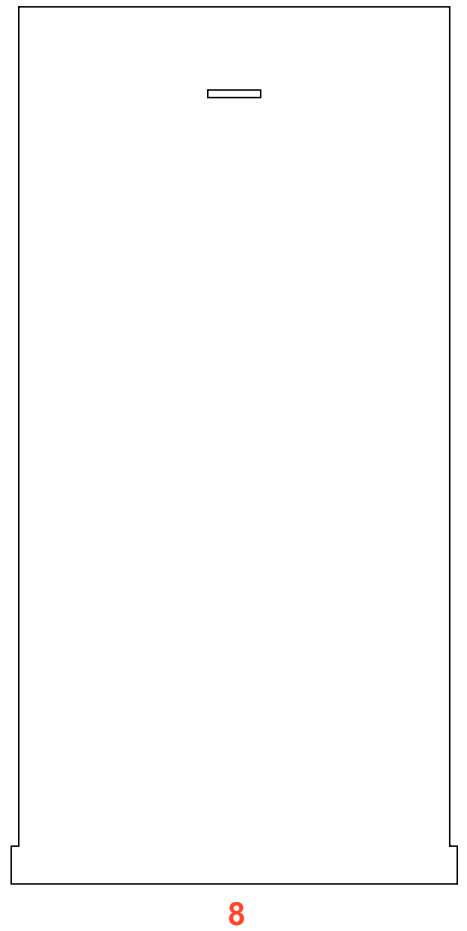
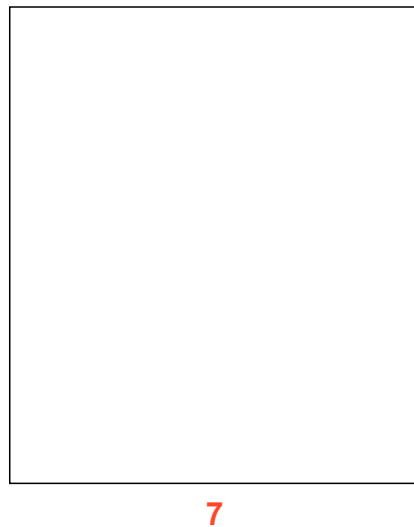
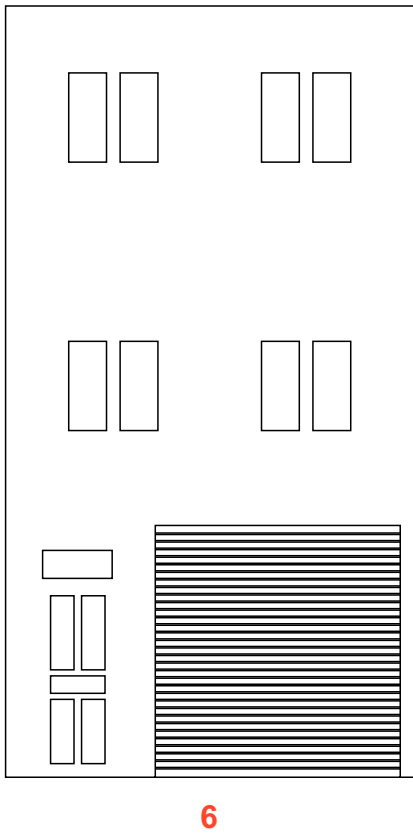
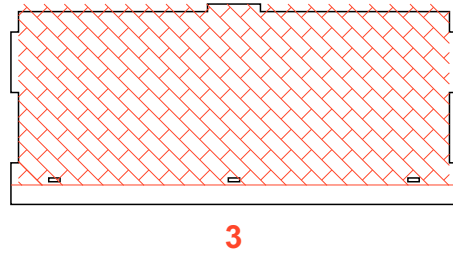
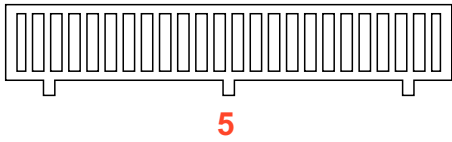
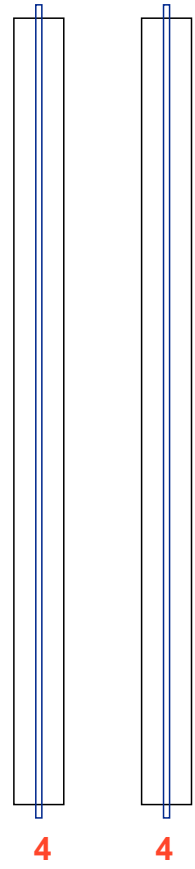
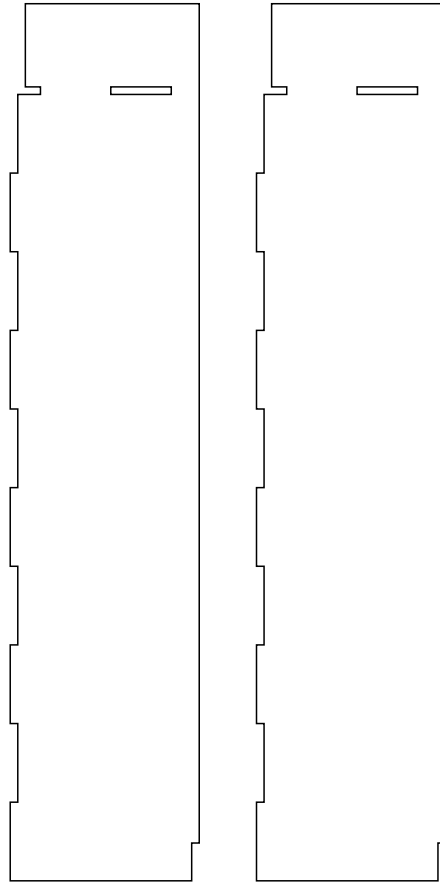
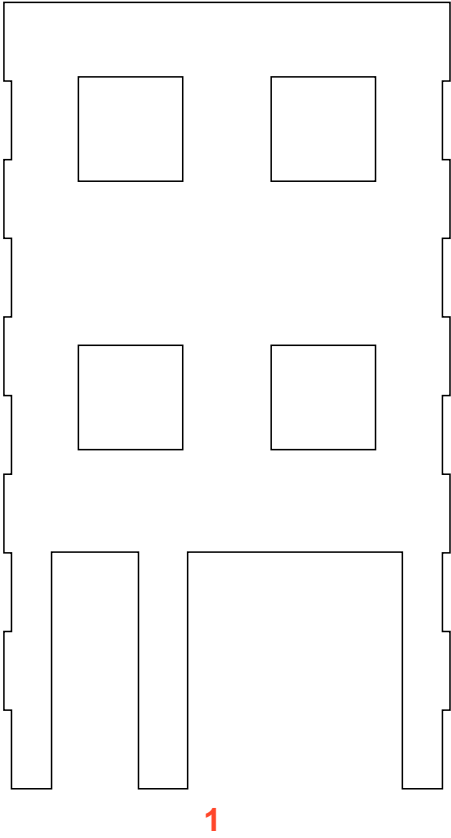


H-0901 Fachada #1
H0 scale (1:87)

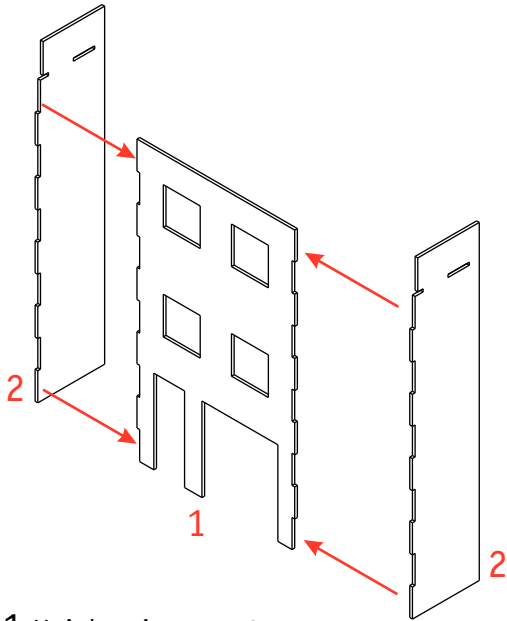


Despiece
Manual de montaje
Planos

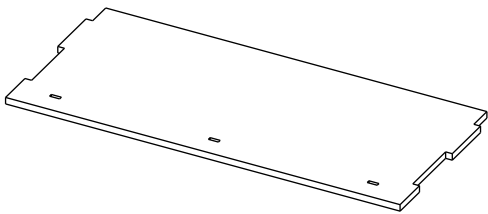
H-0901 Fachada #1. Despiece



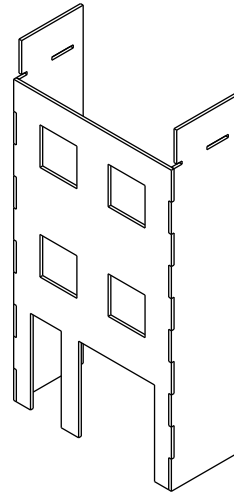
H-0901 Fachada #1. Manual de montaje



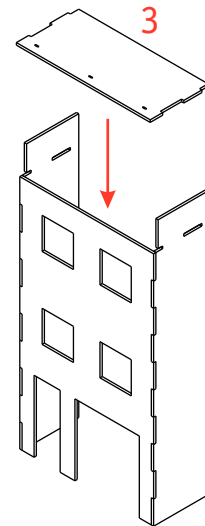
1 Unir las piezas 1 y 2 según muestra el gráfico



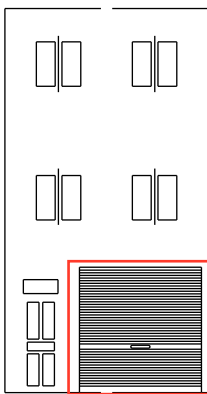
3 Pintar la terraza (pieza 3) del color deseado (p.e. rojo teja)



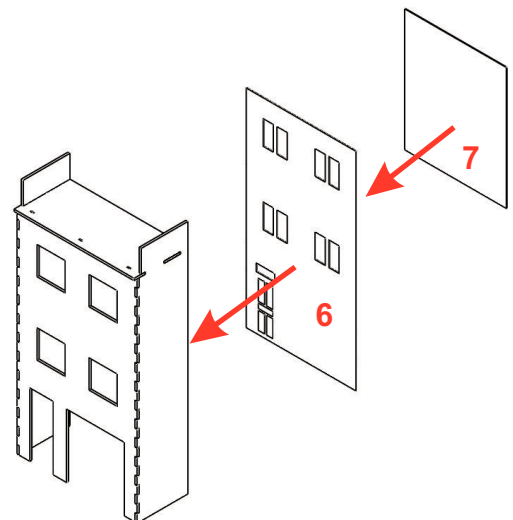
2 Pintar el conjunto del color deseado



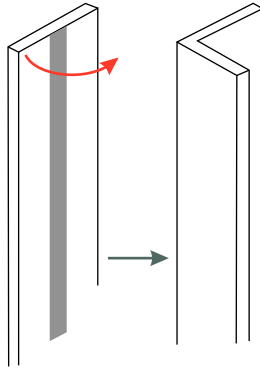
4 Pegar la terraza en su lugar introduciendo por delante y por arriba, flexionando ligeramente las paredes laterales hacia el exterior



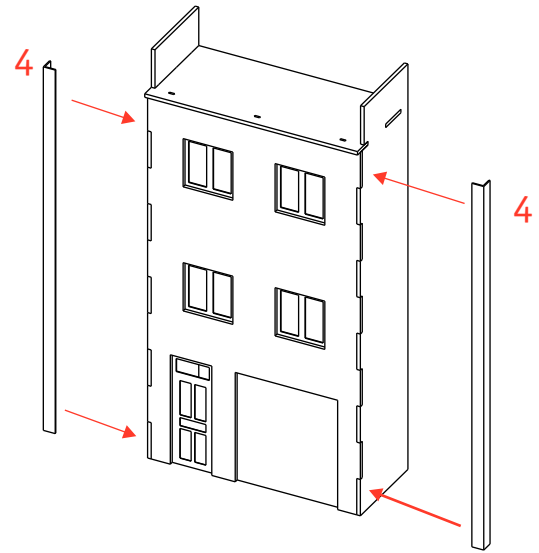
5 Puede dejar la carpintería del color marrón de la cartulina, pero debería pintar de color plateado o gris la zona indicada, que corresponde a la persiana.



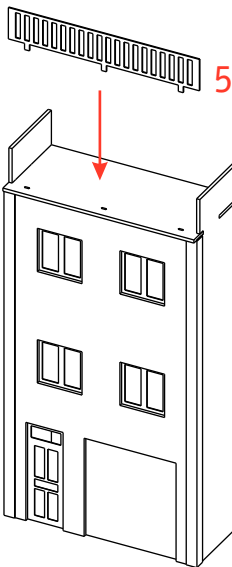
6 Pegar la pieza 6 y 7 por el interior de la fachada



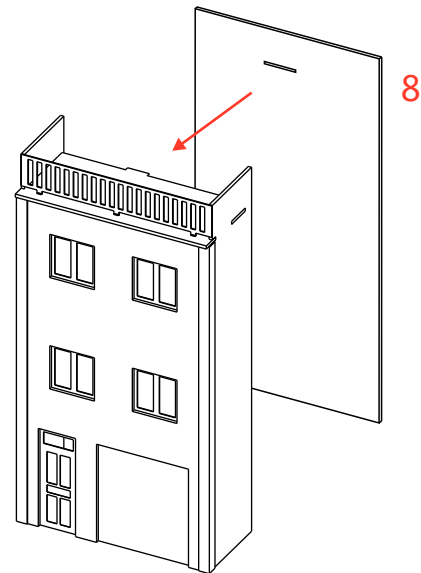
7 Primero doblar como indica el gráfico y después pintar las dos esquinas (pieza 4)



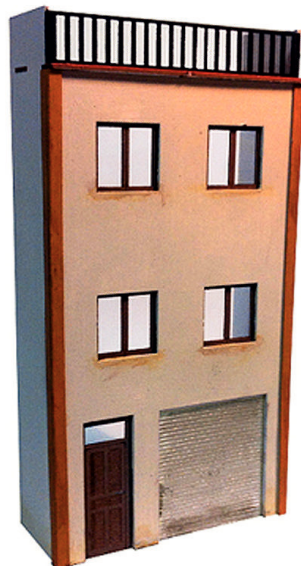
8 Pegar las dos esquinas número 4 a la fachada



9 Pintar y pegar la barandilla en su lugar



10 Pintar y pegar la pared trasera para terminar el montaje.



H-0901 Fachada #1. Planos

